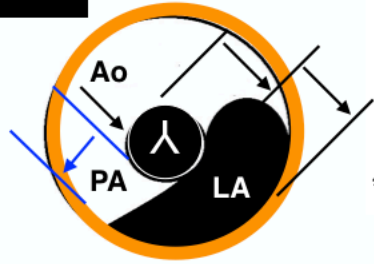


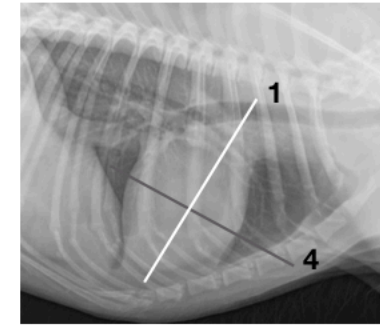
Base

TFFAST® Echo Views - Rogue Version



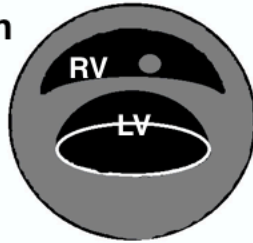
Normal
LA:Ao
*Dog < 1.3 :1
*Cat < 1.6 :1
*Obvious Abnormal ≥ 2:1

Non-echo Option Vet BLUE®
Dry All Views vs. B-lines
Dry All Views Rules Out
Left-sided Congestive Heart Failure



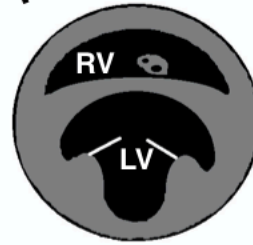
Long-axis 4-chamber View

Mercedes Benz Sign

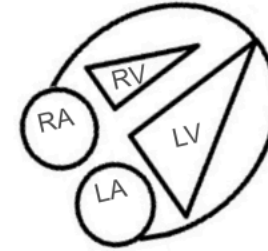


Fishmouth View

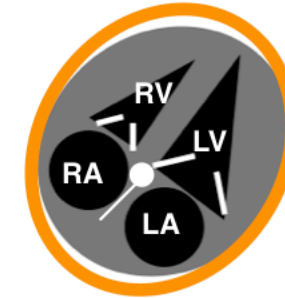
Rotate 90 degrees



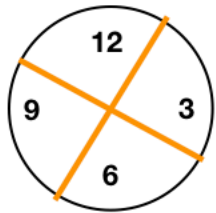
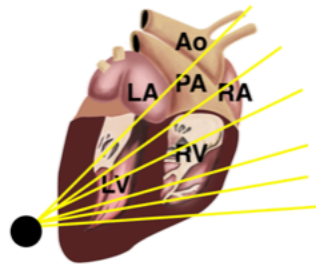
Windshield Wipers



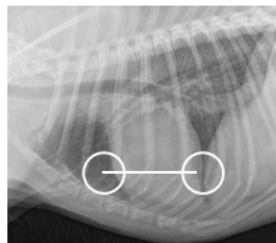
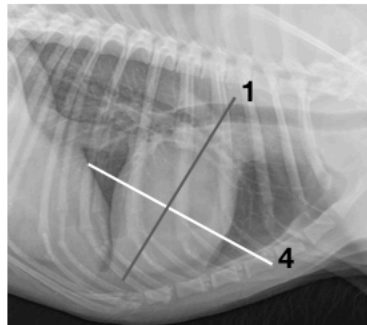
R/O Pulmonary Hypertension
PA:Ao > 1:1
RV:LV > 1:2
Flattened IVS on Mushroom View



Normal Dog & Cat
RA:LA 1:1
RV:LV 1 :3-4
*Obvious Abnormal ~ 1:1



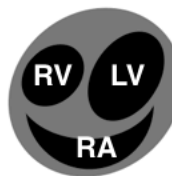
Short-axis View



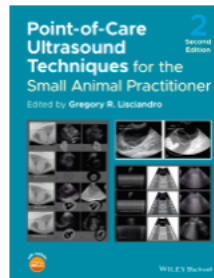
Left Short-axis View



Hammerhead

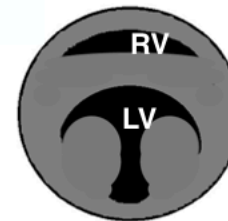


Smiley Face



Mushroom View

M-mode



Batman Sign

Non-echo Option
Caudal Vena Cava
flat, Bounce, FAT
Non-FAT CVC
Rules Out Right-sided
Congestive Heart Failure



Bull's Eye

